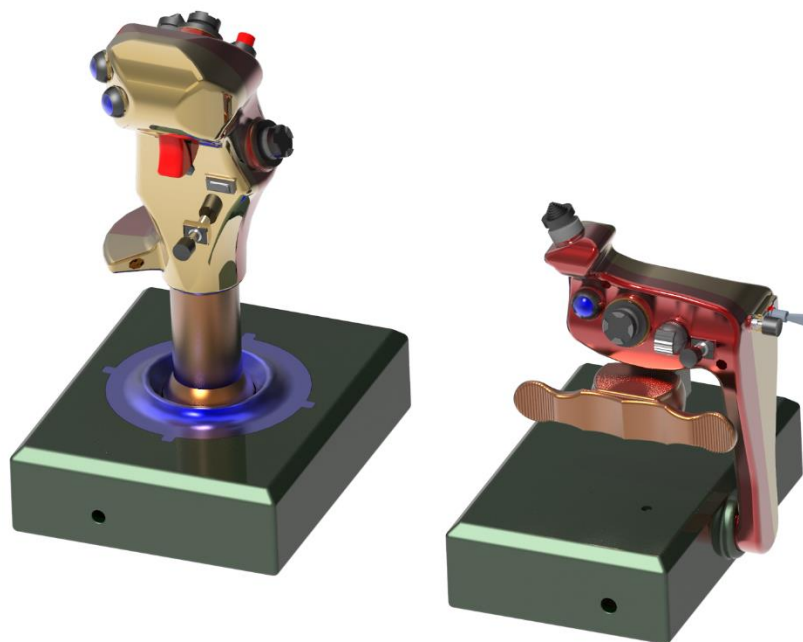
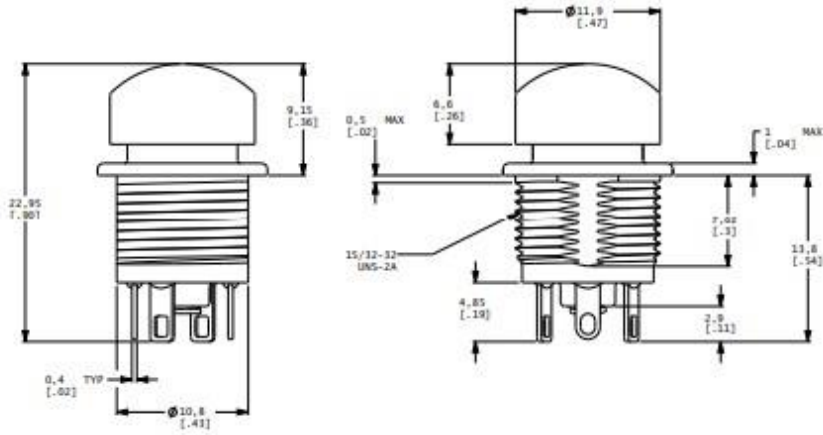


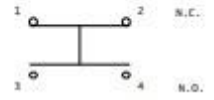
Final Assembly Front view



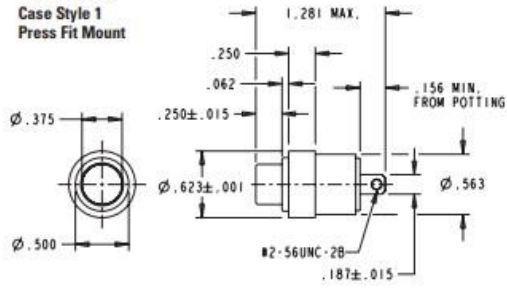
Final assembly rear view



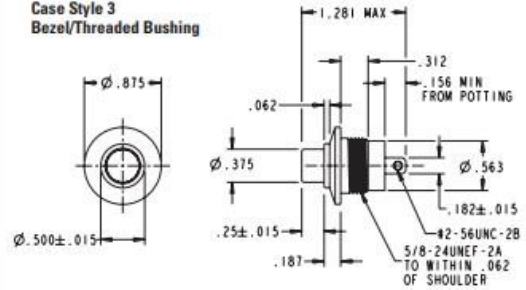
ELECTRICAL SCHEMATIC



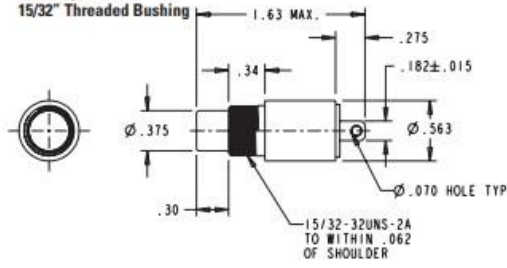
P5-1 Series
Case Style 1
Press Fit Mount



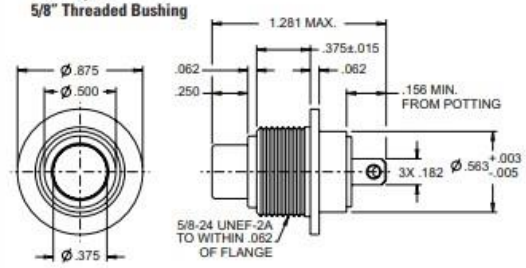
P5-3 Series
Case Style 3
Bezel/Threaded Bushing

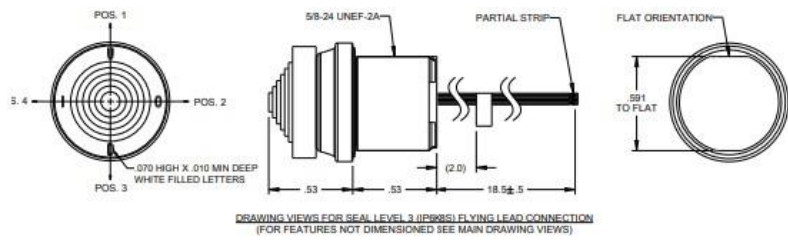
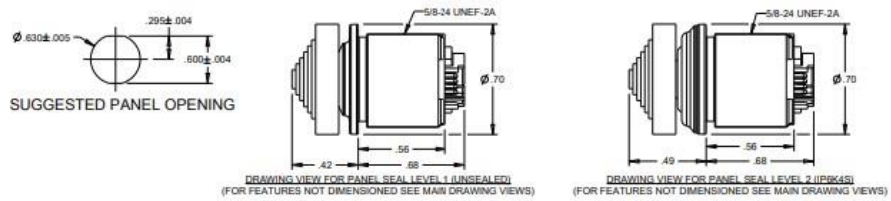
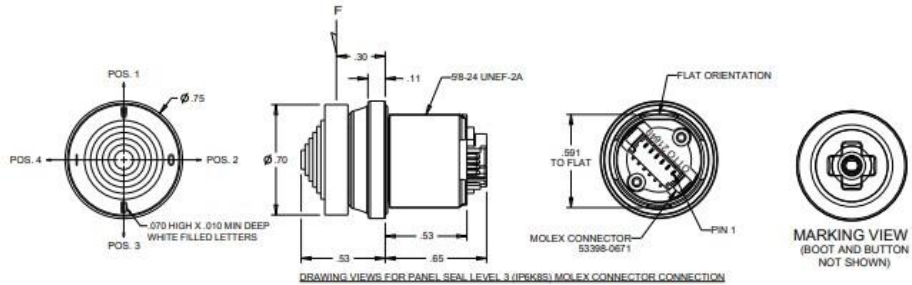


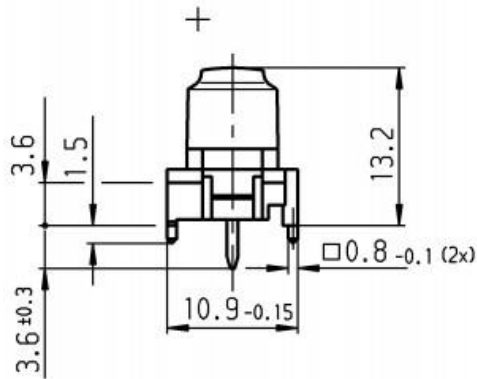
P5-4 Series
Case Style 4
15/32" Threaded Bushing



P5-6 Series
Case Style 6
5/8" Threaded Bushing

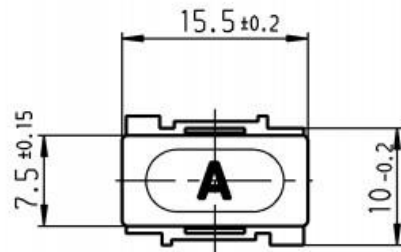
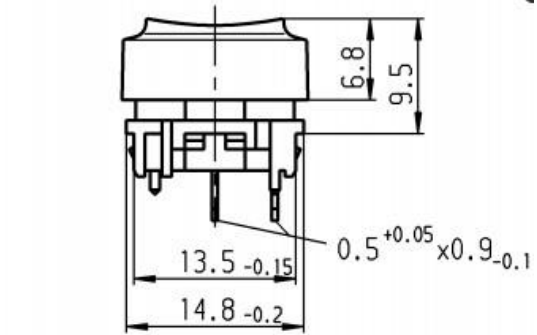
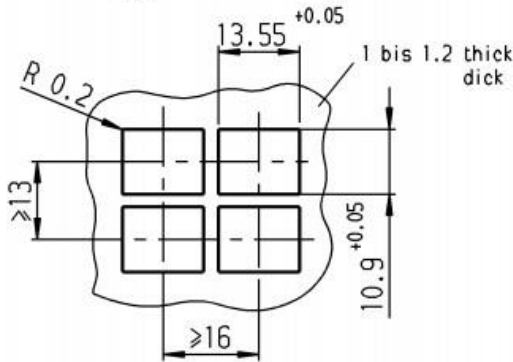






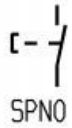
Recommended cut-out for snap-in fixing
(edge opposite to snap-in direction)

Empfohlener Ausschnitt fuer Rastbefestigung
(Grat gegenueber Bestueckungsseite)

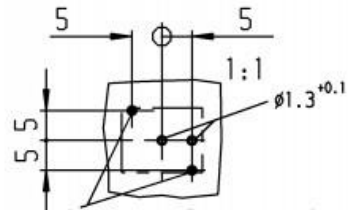


Recommended terminal layout, side of component;
tolerance as per DIN IEC 326 item 3 very fine.

Empfohlenes Lochbild, Bauteilseite;
Toleranz nach DIN IEC 326 Teil 3 sehr fein



Schließer 1-polig

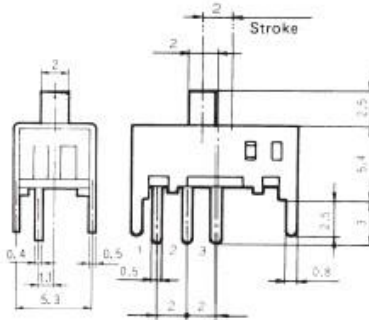
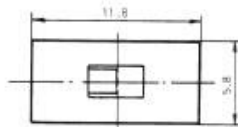
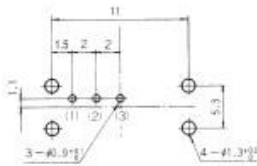


MFS101D-8-Z

shorting



PC Hole Layouts
(Top view)



Terminal numbers are not shown on the switch.

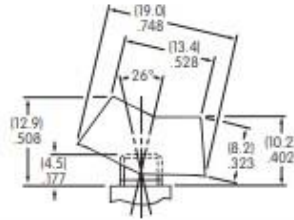
Specifications

| | | |
|----------------------------|---|---|
| Rating | Max. | DC30V 0.3A AC30V 2A (Resistive load) |
| | Min. | DC5V 10mA (Resistive load) |
| Initial contact resistance | 20mΩ Max. | |
| Dielectric strength | AC500V 1 minute | |
| Insulation resistance | 100MΩ Min. | |
| Electrical life | 5,000 cycles at DC30V 0.3A 100cycles at AC30V 2A | |
| Operating force | 2.45±0.98 N | |
| Switch timing | Shorting | |

| Switching function (Viewed from A) | Circuit diagram | No. of terminals |
|---------------------------------------|-----------------|------------------|
| ON | | 3 |
| 2-1 | | |
| ON | | 3 |
| 2-3 | | |

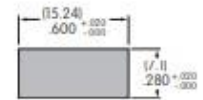
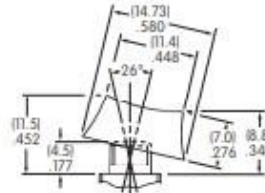
C AT469
.260" (6.6mm) Wide Rocker

Antirotational
 Material: Polyamide
 Colors Available:
 A, B, C, E, F, G, H



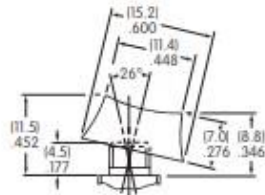
D AT062
.250" (6.35mm) Wide Rocker

Antirotational
 Material: Polyamide
 Colors Available:
 A, B, C



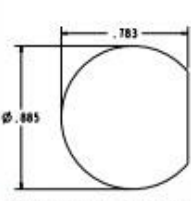
E AT066
.300" (7.6mm) Wide Rocker

Antirotational
 Material: Polyamide
 Colors Available:
 A, B, C

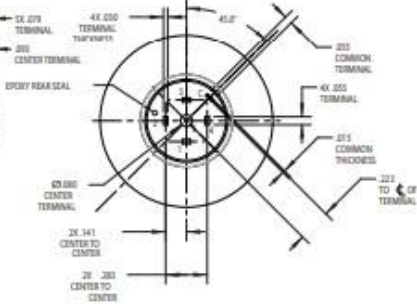
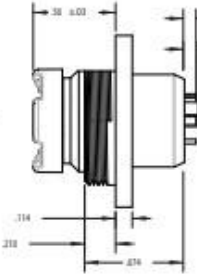
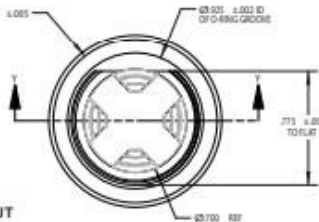


NOTES:
 1. DRAW WITH THIS APPL 2002/ IN EL ELECT
 CHARACTERISTIC RAT IN LOAD RESIS TIME DRV ELECT
 MECHANIC SWITCH
 ACTUAL POL OPERAT
 PHYSICAL BOTTON: HOUSING: SIDE COV ENVIRON TEMPERAT SEAL: U
 MARK: OTTO C 21649 SZ 014 M8805/ TERM DATE C

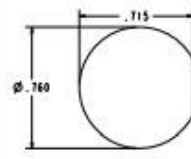
BEHIND PANEL MOUNT



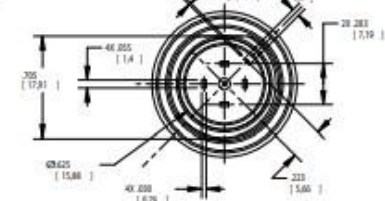
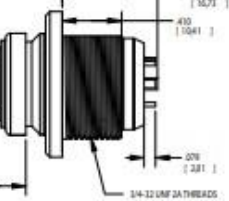
RECOMMENDED PANEL CUTOUT



FRONT PANEL MOUNT



RECOMMENDED PANEL CUTOUT



11. 2011/65/EU (ROHS) COMPLIANT

19.05 [.750 in]

9.14 [.360 in]

| | | | | |
|-----|--------|---------------------|----------|----|
| F | 23967 | correct pcb layout | 7/12/19 | MW |
| E | 23147 | drawing update | 12/21/17 | MW |
| D | 17097 | FIXED NOTES, DIMS. | 3/13/07 | TN |
| C | 14585 | REVISED AND REDRAWN | 12/17/04 | TN |
| REV | PCR NO | DESCRIPTION | DATE | BY |

E-SWITCH

TITLE 100SP4T6B12VS5RE

SCALE 2:1 DATE 3/13/2007 DR TN DWG T114060 REV F

| | |
|-------|--------|
| REV. | H |
| Sheet | 1 of 1 |

MECHANICAL DRAWINGS

units: mm[inches]

TOLERANCE: $\pm 0.2\text{mm}$



| | MATERIAL | PLATING |
|--------------------|-------------------------|---------|
| shield | brass | nickel |
| pin contacts (1~9) | brass | silver |
| insulator | Polyamide 6 (PA-1010C2) | |
| shell | ABS (PA-757) | |
| cover | UE630 + PELL (LL120) | |



MECHANICAL DRAWINGS

units: mm[inches]

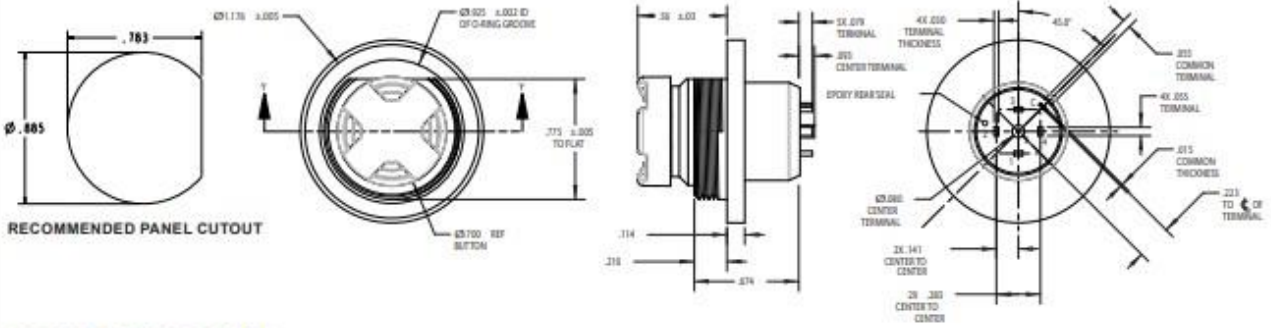
TOLERANCE: ± 0.1 mm



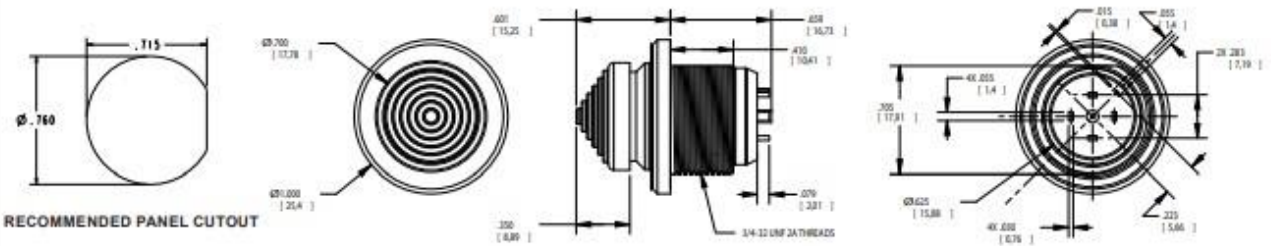
| | MATERIAL | PLATING |
|--------------------|--------------------|---------|
| shell | copper | nickel |
| pin contacts (1~9) | brass | silver |
| insulator | Nylon6+glass fiber | |
| boot | PE + 2L | |
| hood | ABS (PA-757) | |



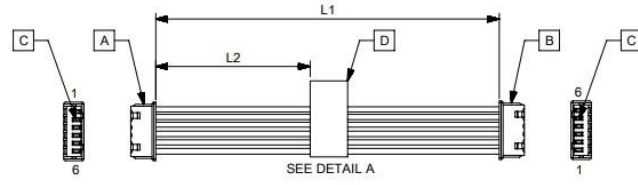
BEHIND PANEL MOUNT



FRONT PANEL MOUNT



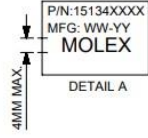
| ITEM | PART# | DESCRIPTION | QTY | UOM | FROM | TO | DESCRIPTION | COLOR |
|------|-----------|---|-----|-----|------|----|----------------------------|-------|
| A,B | 510210600 | Picoblade1.25 Rec Hsg 6P | 2 | PC | A1 | B6 | CABLE 28 AWG UL 1061 BLACK | BLACK |
| C | 500588000 | Picoblade1.25 Crimp Rec Term Chain | 12 | PC | A2 | B5 | CABLE 28 AWG UL 1061 BLACK | BLACK |
| D | 887804719 | Blank label 12.7x35.5mm (WHT:12.7mm) HF | 1 | PC | A3 | B4 | CABLE 28 AWG UL 1061 BLACK | BLACK |
| | | | | | A4 | B3 | CABLE 28 AWG UL 1061 BLACK | BLACK |
| | | | | | A5 | B2 | CABLE 28 AWG UL 1061 BLACK | BLACK |
| | | | | | A6 | B1 | CABLE 28 AWG UL 1061 BLACK | BLACK |



| TABLE | | | |
|-------------|--------|--------|---------------------------|
| PART NUMBER | L1 | L2 | TITLE |
| 151340600 | 50±6 | 20±5 | Picoblade 6 Circuit 50MM |
| 151340601 | 100±6 | 45±5 | Picoblade 6 Circuit 100MM |
| 151340602 | 150±8 | 70±5 | Picoblade 6 Circuit 150MM |
| 151340603 | 300±10 | 145±10 | Picoblade 6 Circuit 300MM |
| 151340605 | 450±10 | 220±10 | Picoblade 6 Circuit 450MM |
| 151340606 | 600±10 | 295±10 | Picoblade 6 Circuit 600MM |

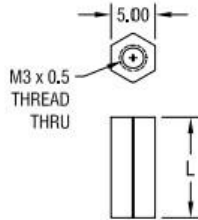
- NOTES:
- Cable assembly to be tested 100% for continuity and polarity.
 - Label text must be 2mm max. In height with Arial font.
 - Connector view shown is from mating side.
 - Label must be wrapped in Flag type.
 - Stick UL label on the outside carton.

| REVISION | | | |
|------------|-----|-----------------------------------|---------|
| DATE | REV | DESCRIPTION | CHANGER |
| 26/07/2016 | A | INITIAL RELEASE | DICK |
| 26/04/2019 | B | PROJECT TRANSFER FROM DG TO INDIA | ARAJU |
| 24/06/2019 | B1 | LABEL CHANGE | ARAJU |



| | | | | | |
|--|---|---|---|--|----------------------|
| QUALITY SYMBOLS | THIS DRAWING CONTAINS INFORMATION THAT IS PROPRIETARY TO MOLEX ELECTRONIC TECHNOLOGIES, LLC AND SHOULD NOT BE USED WITHOUT WRITTEN PERMISSION | GENERAL DIMENSIONAL TOLERANCES (UNLESS SPECIFIED) | mm | NTS | molex |
| <input type="checkbox"/> 0 <input type="checkbox"/> 0 <input type="checkbox"/> 0 <input type="checkbox"/> 0 <input type="checkbox"/> 0 <input type="checkbox"/> 0 <input type="checkbox"/> 0 <input type="checkbox"/> 0 <input type="checkbox"/> 0 <input type="checkbox"/> 0 | EC NO: 619891 DRAWN: ANJALI CHECKED: ANJALI DATE: 06/28/2019 | TOLERANCES (UNLESS SPECIFIED) ANGULAR TOL ± 4 PLACES ± 3 PLACES ± 2 PLACES ± 1 PLACE ± 0 PLACES ± DRAFT WHERE APPLICABLE MUST REMAIN WITHIN DIMENSIONS | DRAWN BY: WLXIE DATE: 2016/07/12 CHECKED BY: DHUANG 16 DATE: 2016/07/25 APPR BY: YXZOU DATE: 2016/07/28 DRAFTER: ANJALI DATE: 2019/06/28 THIRD ANGLE PROJECTION | PRODUCT CUSTOMER DRAWING SERIES: 201234 MATERIAL NUMBER: SEE TABLE CUSTOMER: GENERAL MARKET | |
| RELEASE STATUS: P1 | RELEASE DATE: 2019/06/28 04:28:05 | DOCUMENT NUMBER: 2012341358 | DOC FREQ: PSD | DOC FMT: 000 | SHEET NUMBER: 1 OF 1 |

THIS DOCUMENT IS THE PROPERTY OF
KEYSTONE ELECTRONICS CORP. AND
SHALL NOT BE REPRODUCED, DISTRIBUTED
OR USED AS A BASIS FOR MANUFACTURE
WITHOUT PRIOR WRITTEN PERMISSION
FROM KEYSTONE ELECTRONICS CORP.



| PART NO. | 'L' DIM. |
|----------|----------|
| 25508 | 6.00 |
| 25509 | 8.00 |
| 25510 | 10.00 |
| 25511 | 12.00 |
| 25512 | 15.00 |
| 25513 | 18.00 |

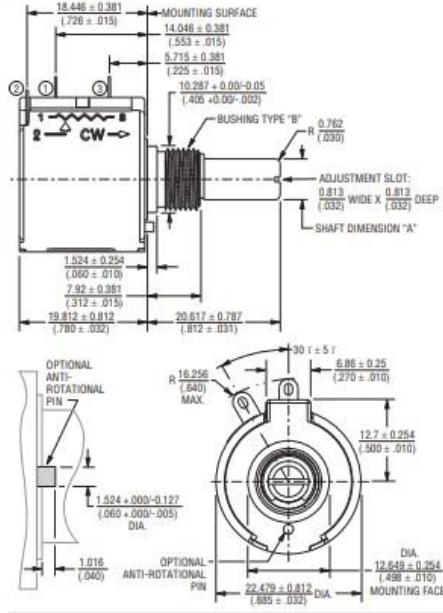
NOTE:
1. ALL DIMENSIONS ARE IN MILLIMETERS

| | | | |
|-----------------------------------|--|--------|-------------|
| KEYSTONE ELECTRONICS CORP. | | | |
| ASTORIA, N.Y. 11105-2017 | | | |
| PART NAME | | | |
| 5mm THREADED HEX STANDOFF | | | |
| MATERIAL | | | |
| NYLON 6/6 | | | |
| FINISH | | DRN BY | DATE |
| - | | BOONE | 7.18.06 |
| | | APP'D | SCALE |
| | | LN | 2X |
| TOLERANCES | | INCH | M/M |
| DECIMAL | | ± | [±0.40] |
| ANGULAR | | ± 1° | |
| UNLESS OTHERWISE SPECIFIED | | CODE | DWG NO. |
| | | C/M | 25508-25513 |

| DATE | DESCRIPTION | REV. |
|------|-------------|------|
| | | |

Product Dimensions

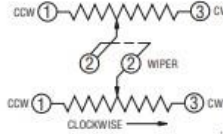
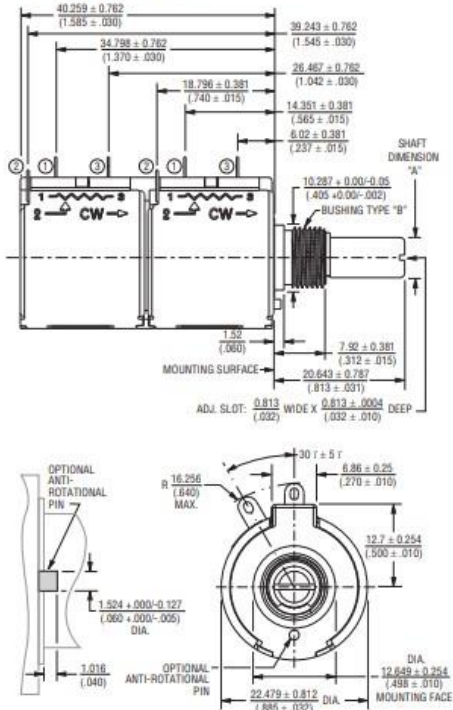
Single Gang, Bushing Mount

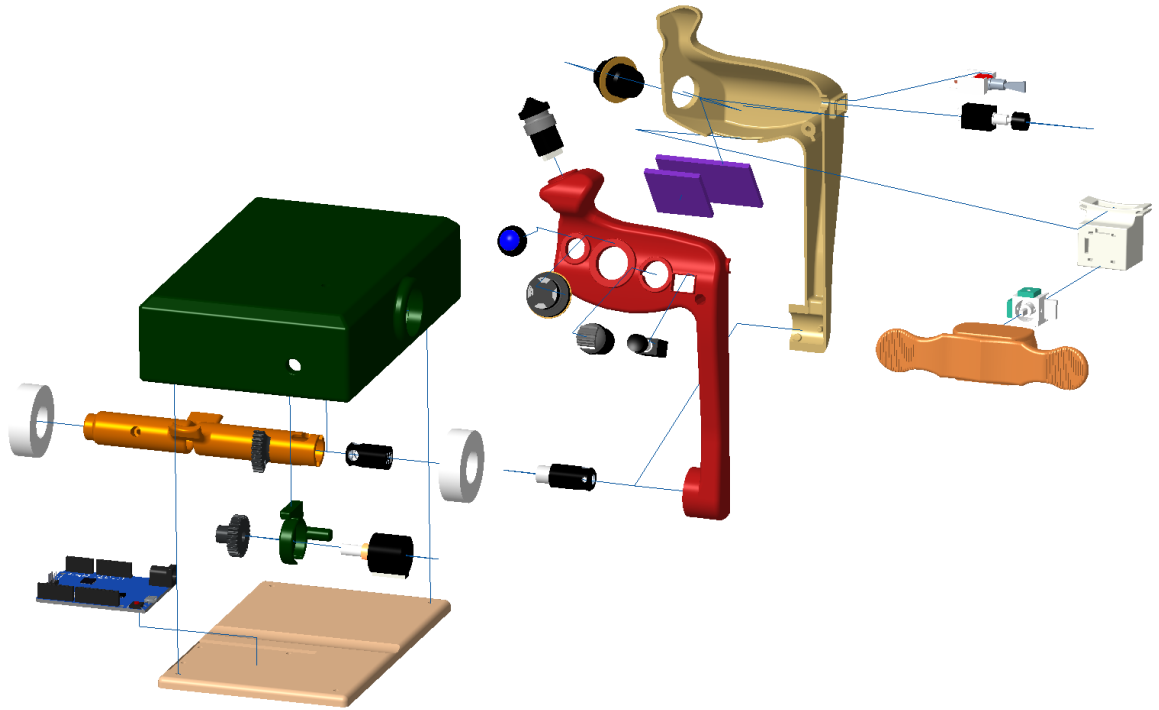


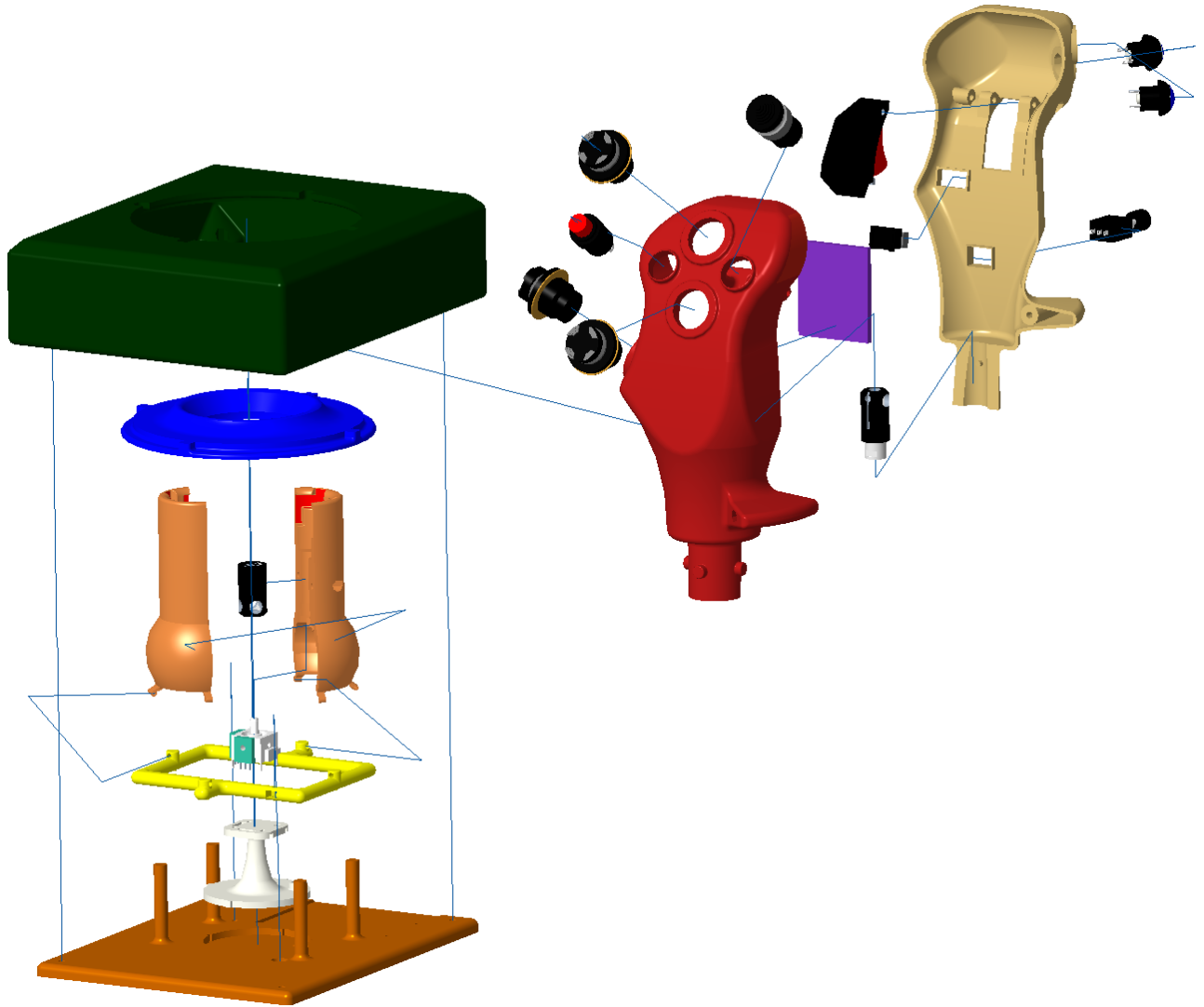
TOLERANCES: EXCEPT WHERE NOTED
 DECIMALS: XX = (0.02) XXX = (0.05) XXXX = (0.127) XXXXX = (0.254)
 DIMENSIONS: MM (IN)

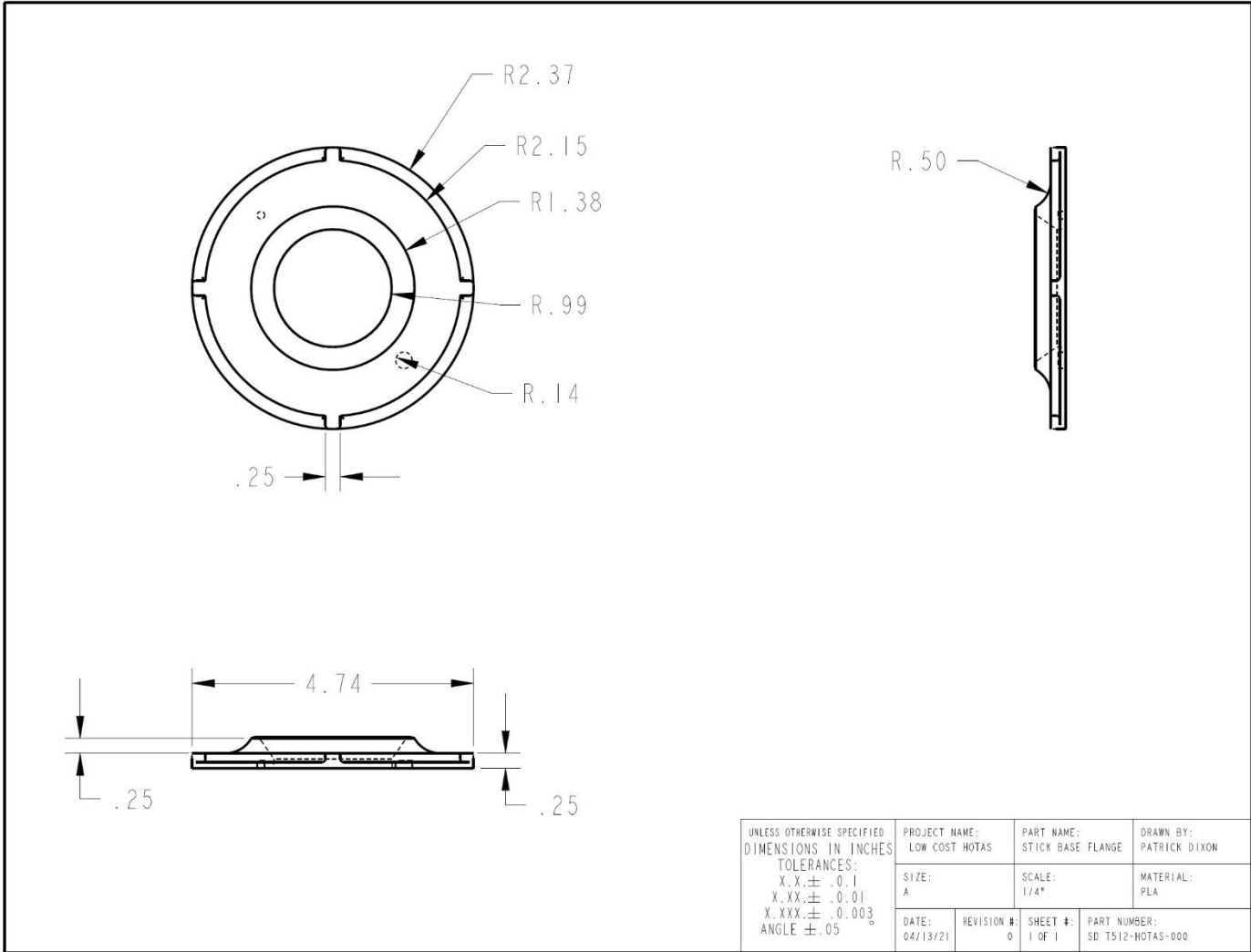
| Bushing Selection Code | Shaft Dimension "A" | Shaft Material | Bushing Type "B" | Bushing Material |
|------------------------|------------------------------------|---------------------|-----------------------|------------------|
| A | 6.34 ±0-0.022 (0.249 ±0-0.0009) | Nickel Plated Brass | 3/8" 32-LINEF-2A THD. | Brass |
| B | 8.00 ±0-0.022 (0.315 ±0-0.0009) | Nickel Plated Brass | M9 X 0.75-6g | Brass |
| C | 6.34 ±0-0.007 (0.249 ±0-0.0003) | Stainless Steel | 3/8" 32-LINEF-2A THD. | Bronze |
| D | 8.00 ±0-0.007 (0.315 ±0-0.0003) | Stainless Steel | M9 X 0.75-6g | Bronze |
| G | 6.34 ±0-0.007 (0.249 ±0-0.0003) | Stainless Steel | 3/8" 32-LINEF-2A THD. | Bronze |
| H | 8.00 ±0-0.007 (0.315 ±0-0.0003) | Stainless Steel | M9 X 0.75-6g | Bronze |

Dual Gang, Bushing Mount

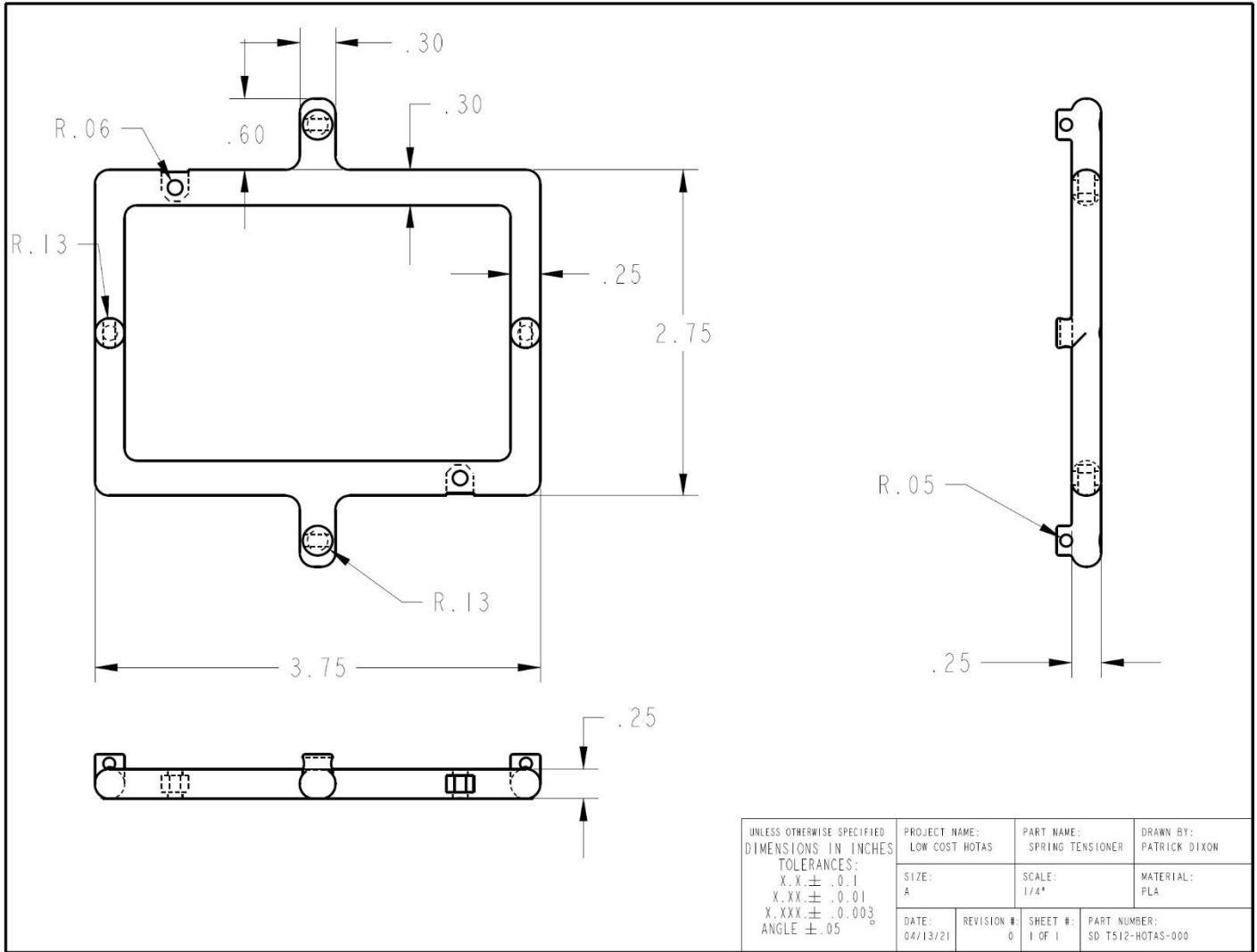


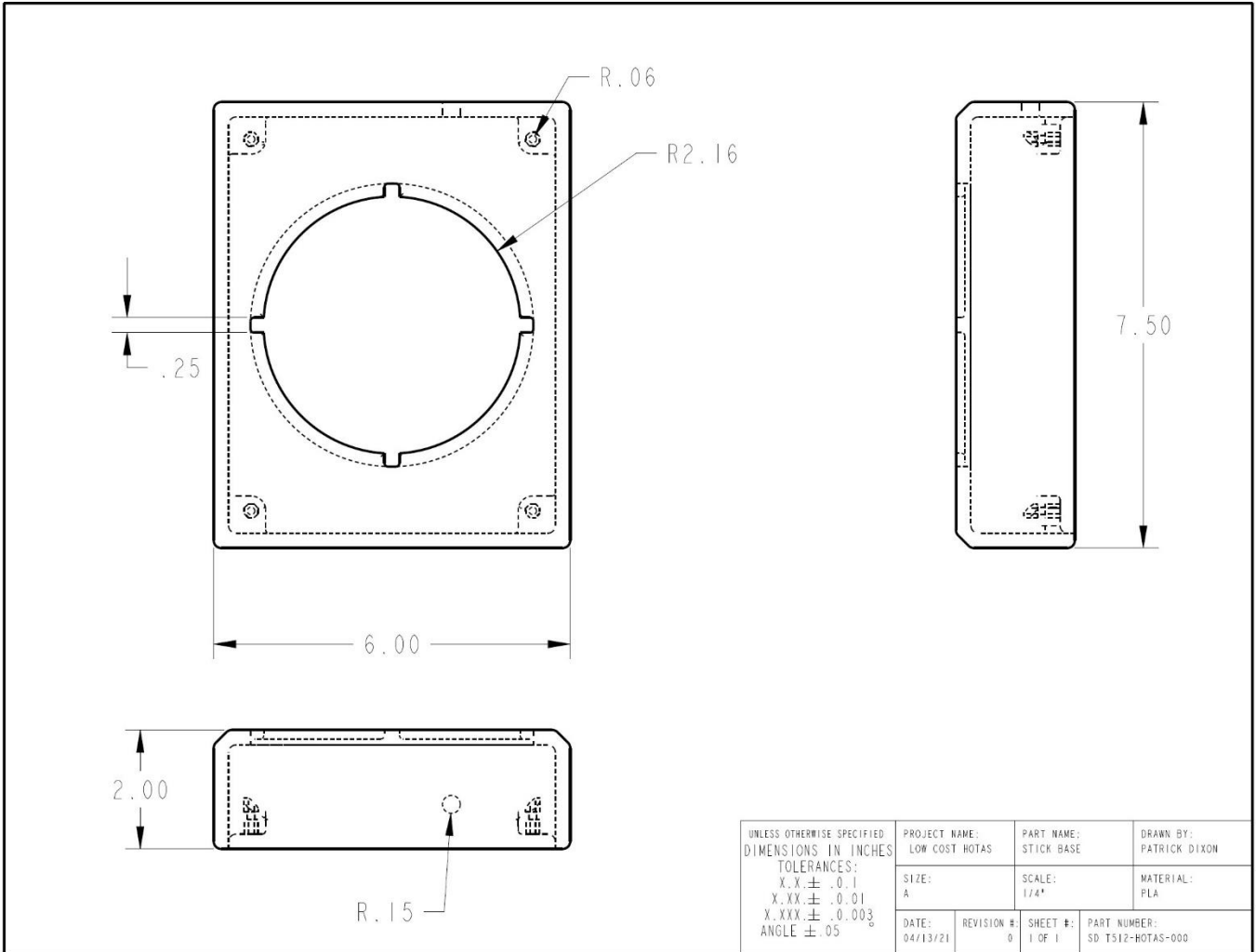


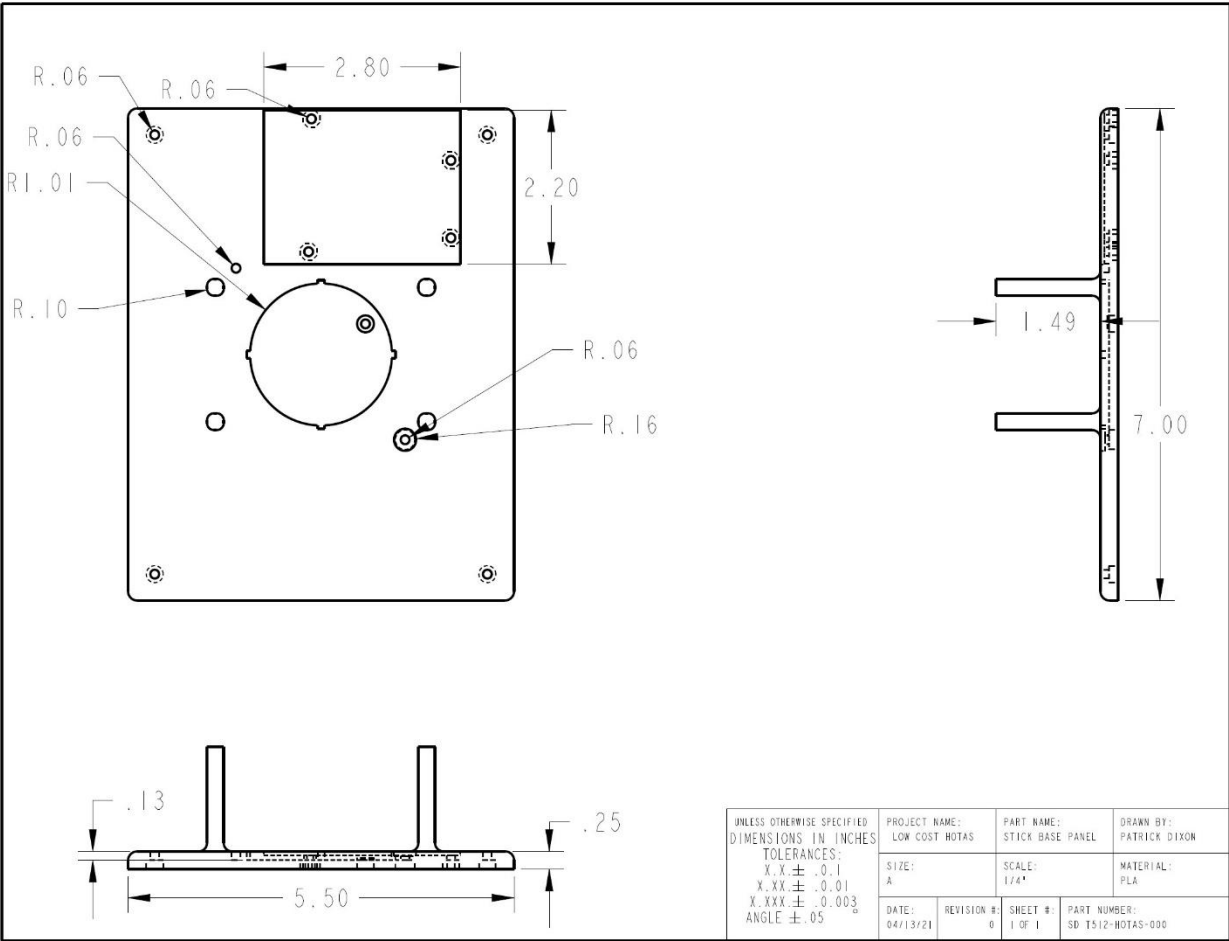




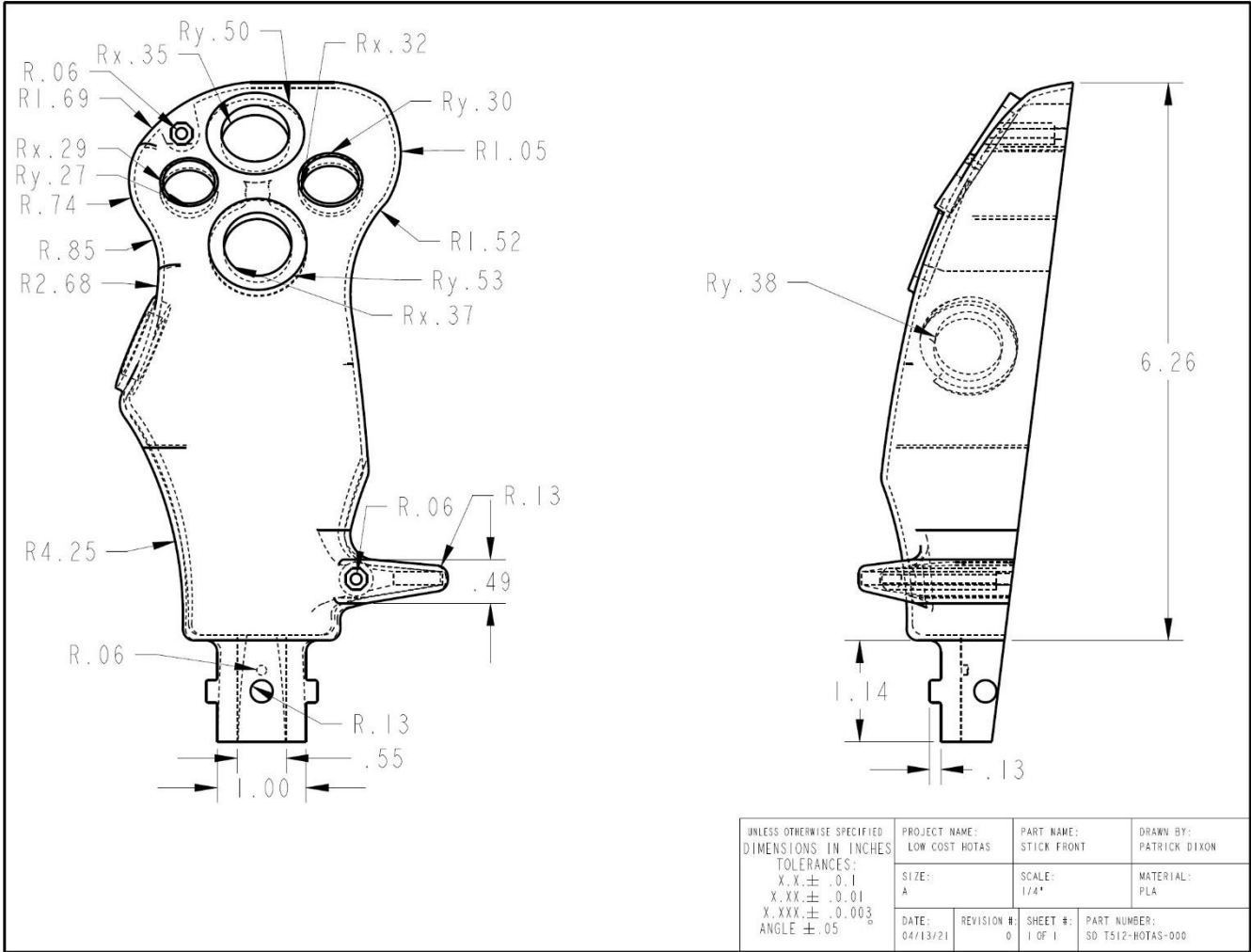
| | | | | | | |
|---|---------------------------------|------------------|---------------------------------|-----------------------------------|----------------------------|--|
| UNLESS OTHERWISE SPECIFIED DIMENSIONS IN INCHES TOLERANCES: X.X ± .01 X.XX ± .001 X.XXX ± .0003 ANGLE ± .05 | PROJECT NAME: LOW COST HOTAS | | PART NAME: STICK BASE FLANGE | | DRAWN BY: PATRICK DIXON | |
| | SIZE: A | | SCALE: 1/4" | | MATERIAL: PLA | |
| | DATE: 04/13/21 | REVISION #: 0 | SHEET #: 1 OF 1 | PART NUMBER: SD TS12-HOTAS-000 | | |



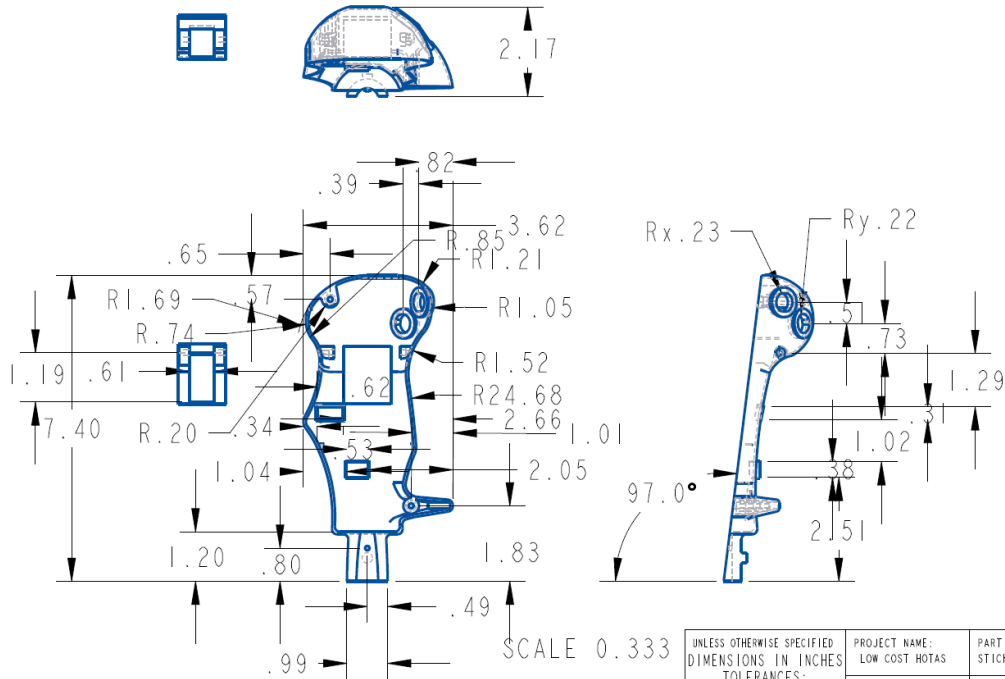




| | | | | |
|---|------------------|---------------------------------|-----------------------------------|----------------------------|
| UNLESS OTHERWISE SPECIFIED DIMENSIONS IN INCHES | | PROJECT NAME: LOW COST HOTAS | PART NAME: STICK BASE PANEL | DRAWN BY: PATRICK DIXON |
| TOLERANCES: X.X ± .01 X.XX ± .001 X.XXX ± .0003 ANGLE ± .05 | | SIZE: A | SCALE: 1/4" | MATERIAL: PLA |
| DATE: 04/13/21 | REVISION #: 0 | SHEET #: 1 OF 1 | PART NUMBER: SD TS12-HOTAS-000 | |



NOTE: SEE MECHANICAL MODEL STICKBACK ASSEMBLY FOR GREATER DETAILS
 DRAWINGS USED FOR GD&T CHECKS
 THE TRIGGER MOUNT HAS BEEN MOVED TO SHOW GREATER DETAIL
 THE STICKS FRONT DIMENSIONS ARE SIMILAR BETWEEN THE STICK BACK AND FRONT
 THE SHELL IS MADE BY USING THE OUTER DIMENSIONS AND A 0.625 WIDTH

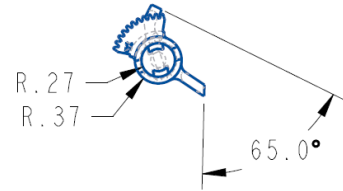
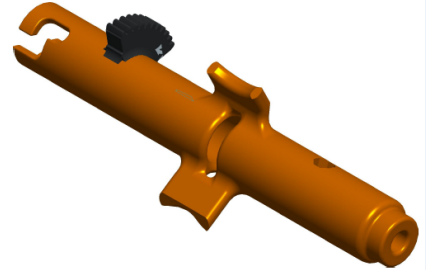
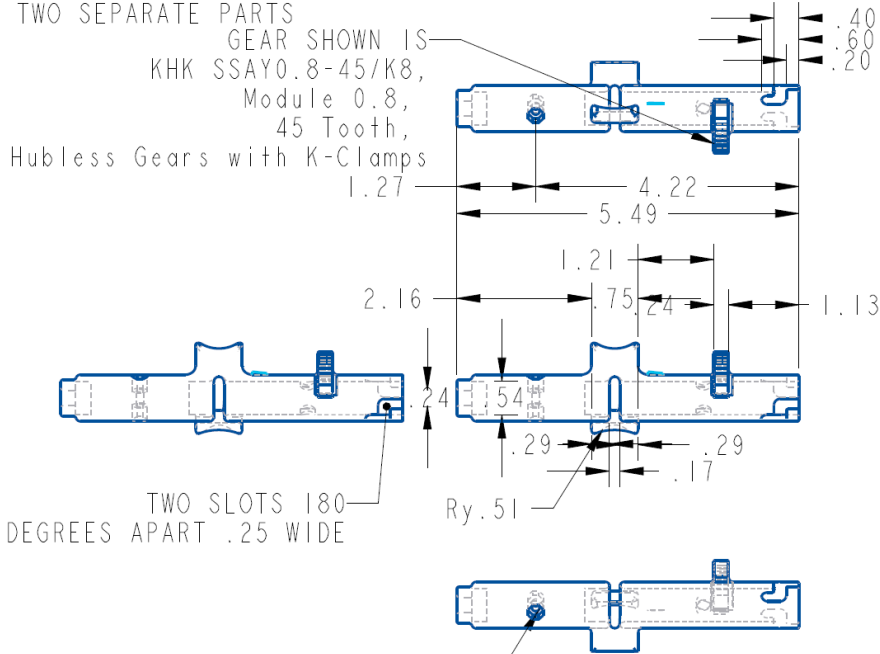


SCALE 0.333

| | | | | |
|---|------------------|---------------------------------|-----------------------------------|----------------------------|
| UNLESS OTHERWISE SPECIFIED DIMENSIONS IN INCHES | | PROJECT NAME: LOW COST HOTAS | PART NAME: STICKBACK | DRAWN BY: PATRICK DIXON |
| TOLERANCES: X.X ± .01 X.XX ± .001 X.XXX ± .0003 ANGLE ± .05 | | SIZE: A | SCALE: 1/3" | MATERIAL: PLA |
| DATE: 04/13/21 | REVISION #: 0 | SHEET #: 1 OF 1 | PART NUMBER: SD TS12-HOTAS-011 | |

NOTE: SEE MECHANICAL MODEL FOR GREATER DETAILS
 DRAWINGS USED FOR GD&T CHECKS
 THIS PART IS CUT IN HALF THRU THE TWO SLOTS TO MAKE
 TWO SEPARATE PARTS

GEAR SHOWN IS
 KHK SSAY0.8-45/K8,
 Module 0.8,
 45 Tooth,
 Hubless Gears with K-Clamps



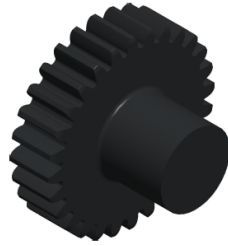
TWO SLOTS 180
 DEGREES APART .25 WIDE

SCREW AND NUT HOLE ARE 0.24W

SCALE 0.750

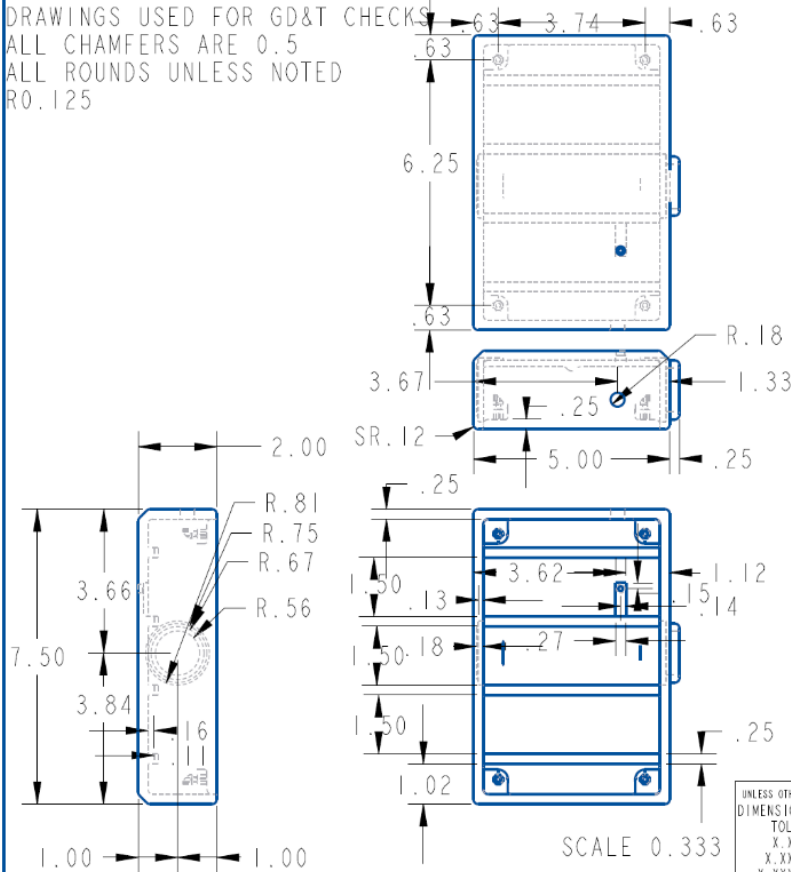
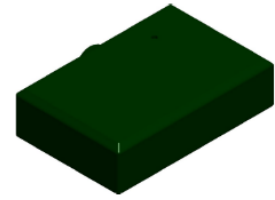
| | | | | |
|---|-----------------|---------------------------------|-----------------------------------|----------------------------|
| UNLESS OTHERWISE SPECIFIED DIMENSIONS IN INCHES | | PROJECT NAME: LOW-COST-HOTAS | PART NAME: TH-SHAFT&GEAR | DRAWN BY: PATRICK DIXON |
| TOLERANCES: X.X ± .01 X.XX ± .001 X.XXX ± .0003 ANGLE ± .05 | | SIZE: A | SCALE: 3/4" | MATERIAL: PLA |
| DATE: 04/13/21 | REVISION # 0 | SHEET #: 1 OF 1 | PART NUMBER: SD-TS12-HOTAS-009 | |

NOTE: SEE MECHANICAL MODEL FOR GREATER DETAILS
 DRAWINGS USED FOR GD&T CHECKS
 GEAR SHOWN IS A KHK SSAY0.8-28/K6,
 Module 0.8, 28 Tooth, Hubless Gears with K-Clamps
 THE CLAMPS HAVE BEEN REMOVED, A LARGER SHAFT HAS BEEN ADDED WITH A 1/4" HOLE
 PROVIDED TO SLIDE ONTO THE ROTARY POTENTIOMETER ∇ 0.5" AGAIN CHECK MODELS
 DRAWING WAS UNABLE TO BE OBTAINED FROM KHK GEARS HOME WEBSITE.



| | | | |
|--|---------------------------------|---------------------------------|----------------------------|
| UNLESS OTHERWISE SPECIFIED DIMENSIONS IN INCHES TOLERANCES: X.X ± .0.1 X.XX ± .0.01 X.XXX ± .0.003 ANGLE ± .05 | PROJECT NAME: LOW COST HOTAS | PART NAME: TH SMALL POT GEAR | DRAWN BY: PATRICK DIXON |
| | SIZE: A | SCALE: 2:1" | MATERIAL: PLA |
| | DATE: 04/13/21 | REVISION #: 0 | SHEET #: 1 OF 1 |

NOTE: SEE MECHANICAL MODEL FOR GREATER DETAILS
 DRAWINGS USED FOR GD&T CHECKS
 ALL CHAMFERS ARE 0.5
 ALL ROUNDS UNLESS NOTED
 R0.125

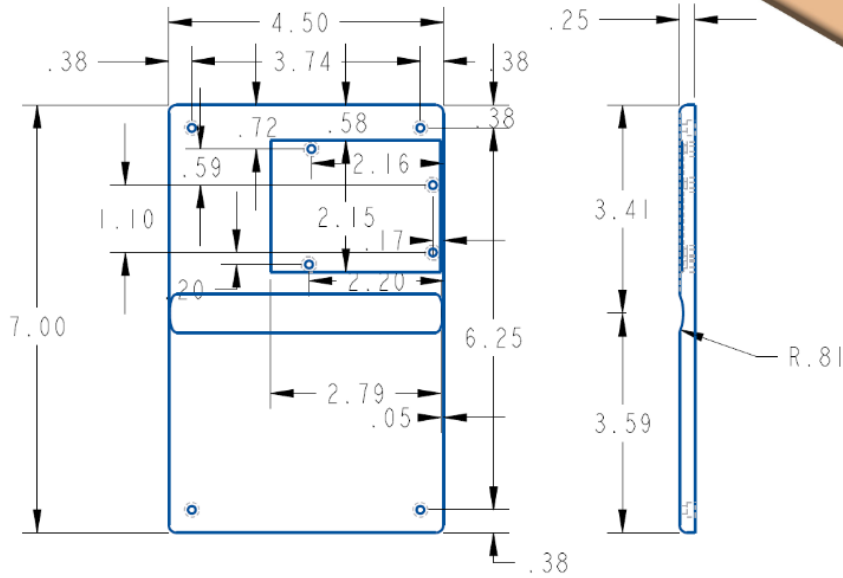
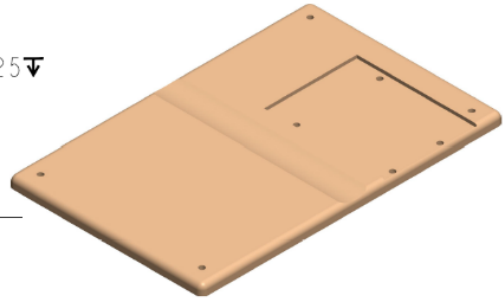


SCALE 0.333

UNLESS OTHERWISE SPECIFIED
 DIMENSIONS IN INCHES
 TOLERANCES:
 X.X ± .01
 X.XX ± .001
 X.XXX ± .0003
 ANGLE ± .05

| | | | | | |
|---------------------------------|------------------|-----------------------------|-----------------------------------|----------------------------|--|
| PROJECT NAME: LOW COST HOTAS | | PART NAME: THROTTLE BASE | | DRAWN BY: PATRICK DIXON | |
| SIZE: A | | SCALE: 1/3" | | MATERIAL: PLA | |
| DATE: 04/13/21 | REVISION #: 0 | SHEET #: 1 OF 1 | PART NUMBER: SD TS12-HOTAS-005 | | |

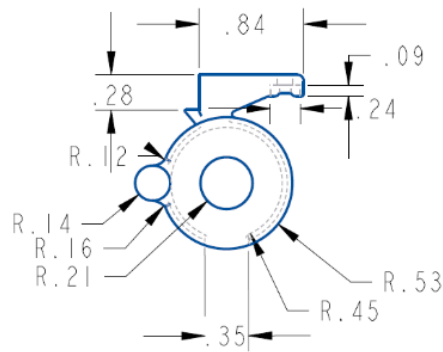
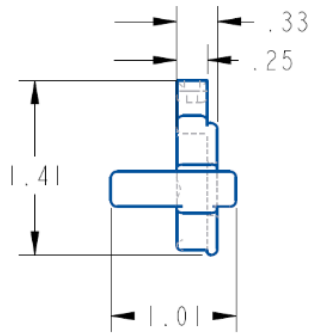
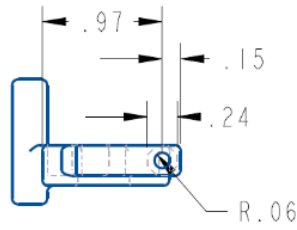
NOTE: SEE MECHANICAL MODEL FOR GREATER DETAILS
 DRAWINGS USED FOR GD&T CHECKS
 ALL THRU HOLES HAVE M3 NUTS ON UNDERSIDE @ .24X.125



SCALE 0.500

| | | | |
|---|---------------------------------|------------------------------|-----------------------------------|
| UNLESS OTHERWISE SPECIFIED DIMENSIONS IN INCHES TOLERANCES: X.X ± .01 X.XX ± .001 X.XXX ± .0003 ANGLE ± .05 | PROJECT NAME: LOW COST HOTAS | PART NAME: THR BASE PANEL | DRAWN BY: PATRICK DIXON |
| | SIZE: A | SCALE: 1/2" | MATERIAL: PLA |
| DATE: 04/13/21 | REVISION #: 0 | SHEET #: 1 OF 1 | PART NUMBER: SD TS12-HOTAS-004 |

NOTE: SEE MECHANICAL MODEL FOR GREATER DETAILS
 DRAWINGS USED FOR GD&T CHECKS
 ALL NUT PLACEMENTS ARE FOR M3 SIZE

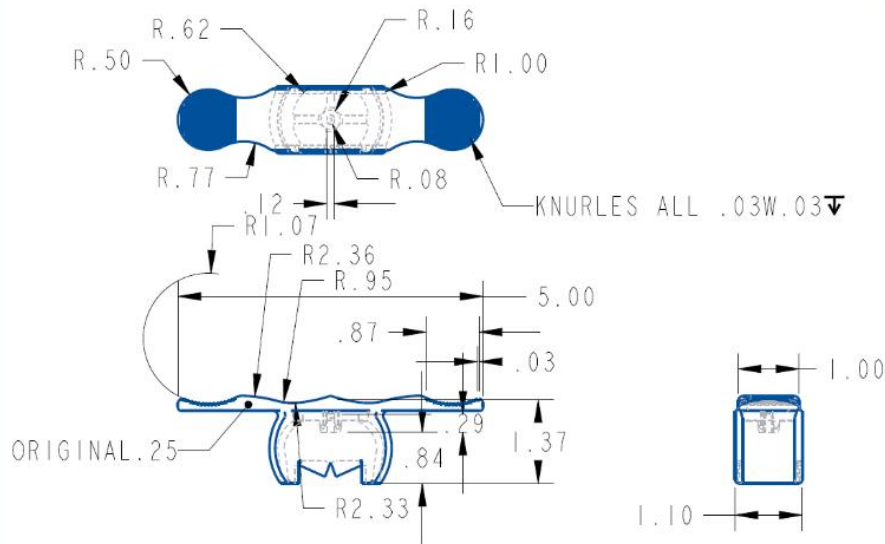
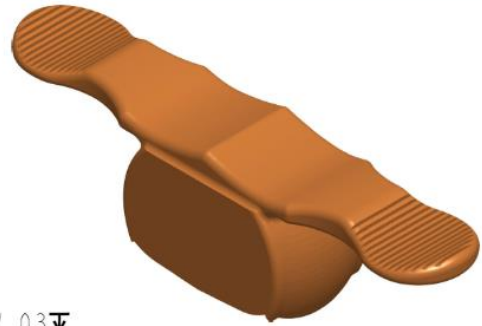


SCALE 1.000

SCALE 1.000

| | | | | | | |
|---|---------------------------------|--------------------|-----------------------------------|--|----------------------------|--|
| UNLESS OTHERWISE SPECIFIED DIMENSIONS IN INCHES TOLERANCES: X.X ± .01 X.XX ± .001 X.XXX ± .0003 ANGLE ± .05 | PROJECT NAME: LOW COST HOTAS | | PART NAME: TH ROT POT MOUNT | | DRAWN BY: PATRICK DIXON | |
| | SIZE: A | | SCALE: 1:1* | | MATERIAL: PLA | |
| DATE: 04/13/21 | REVISION #: 0 | SHEET #: 1 OF 1 | PART NUMBER: SD T512-HOTAS-003 | | | |

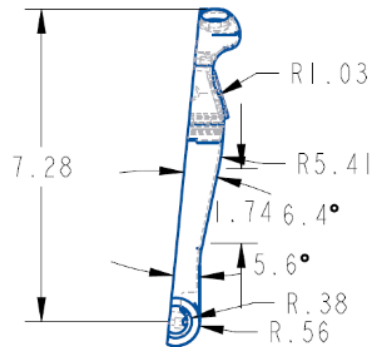
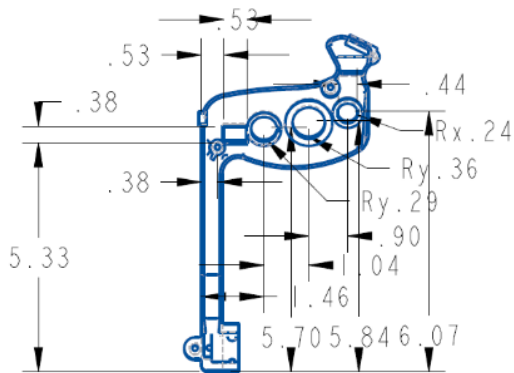
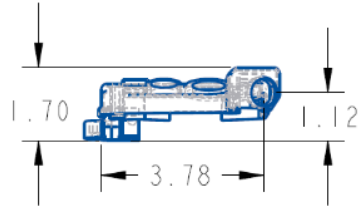
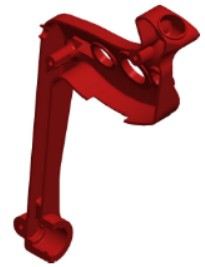
NOTE: SEE MECHANICAL MODEL FOR GREATER DETAILS
DRAWINGS USED FOR GD&T CHECKS



SCALE 0.500

| | | | | |
|---|------------------|---------------------------------|-----------------------------------|----------------------------|
| UNLESS OTHERWISE SPECIFIED DIMENSIONS IN INCHES | | PROJECT NAME: LOW COST HOTAS | PART NAME: YAW_PADDLE | DRAWN BY: PATRICK DIXON |
| TOLERANCES: X.X ± .01 X.XX ± .001 X.XXX ± .0005 ANGLE ± .05 | | SIZE: A | SCALE: 1/2" | MATERIAL: PLA |
| DATE: 04/13/21 | REVISION #: 0 | SHEET #: 1 OF 1 | PART NUMBER: SD TS12-HOTAS-001 | |

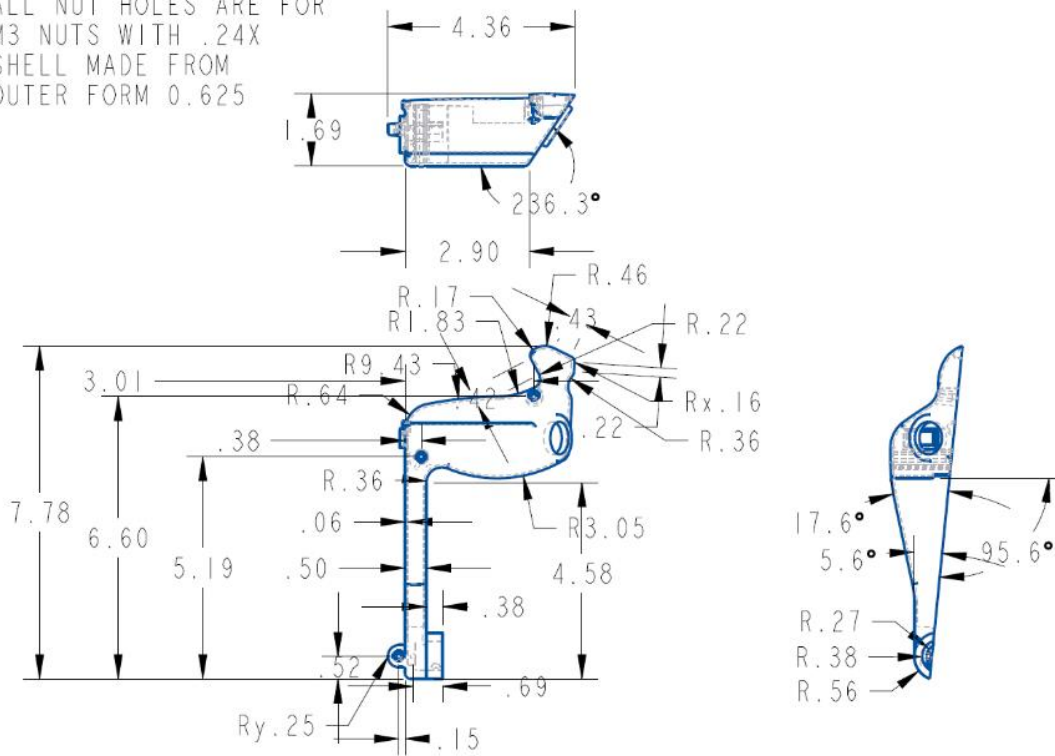
NOTE: SEE MECHANICAL MODEL FOR GREATER DETAILS
 DRAWINGS USED FOR GD&T CHECKS
 HOLES LOCATED PERPENDICULAR TO SURFACES
 SHELL IS MADE FROM OUTER PARAMTERS, 0.625 THICK
 FRONT DIMENSIONS ARE THE SAME AS THROTTLE FRONT DRAWING



SCALE 0.333

| | | | | | | | |
|--|--|---------------------------------|--|-----------------------------|--|-----------------------------------|--|
| UNLESS OTHERWISE SPECIFIED DIMENSIONS IN INCHES TOLERANCES: X.X ± .0.1 X.XX ± .0.01 X.XXX ± .0.003 ANGLE ± .05 | | PROJECT NAME: LOW COST HOTAS | | PART NAME: THROTTLE BACK | | DRAWN BY: PATRICK DIXON | |
| | | SIZE: A | | SCALE: 1/3" | | MATERIAL: PLA | |
| DATE: 04/13/21 | | REVISION #: 0 | | SHEET #: 1 OF 1 | | PART NUMBER: SD T512-HOTAS-008 | |

NOTE: SEE MECHANICAL MODEL FOR GREATER DETAILS
 DRAWINGS USED FOR GD&T CHECKS
 ALL HOLES ARE LOCATED PERPENDICULAR TO SURFACES
 ALL NUT HOLES ARE FOR
 M3 NUTS WITH .24X
 SHELL MADE FROM
 OUTER FORM 0.625

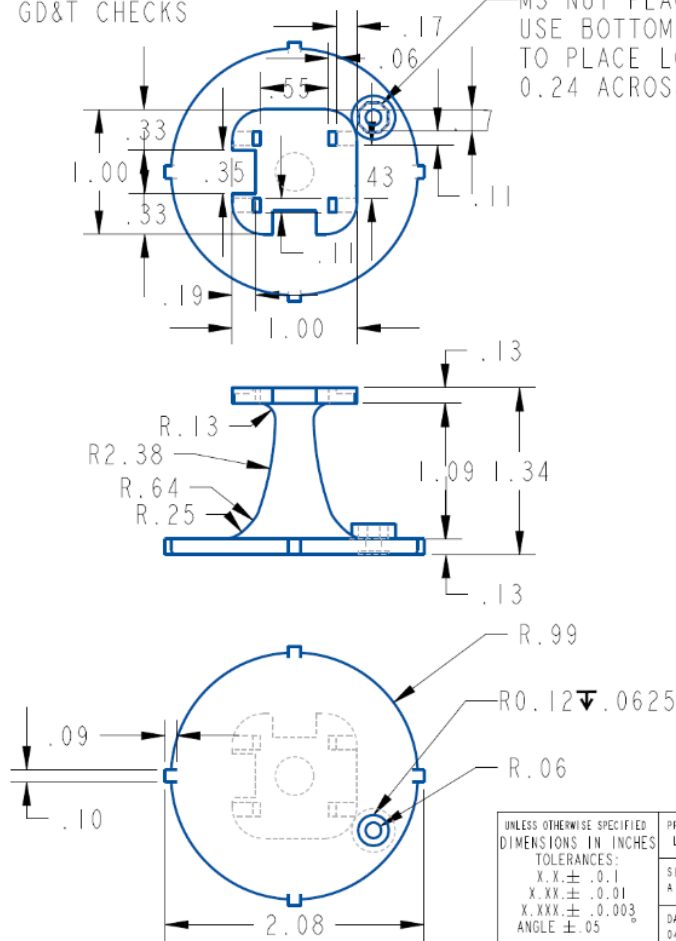


SCALE 0.333

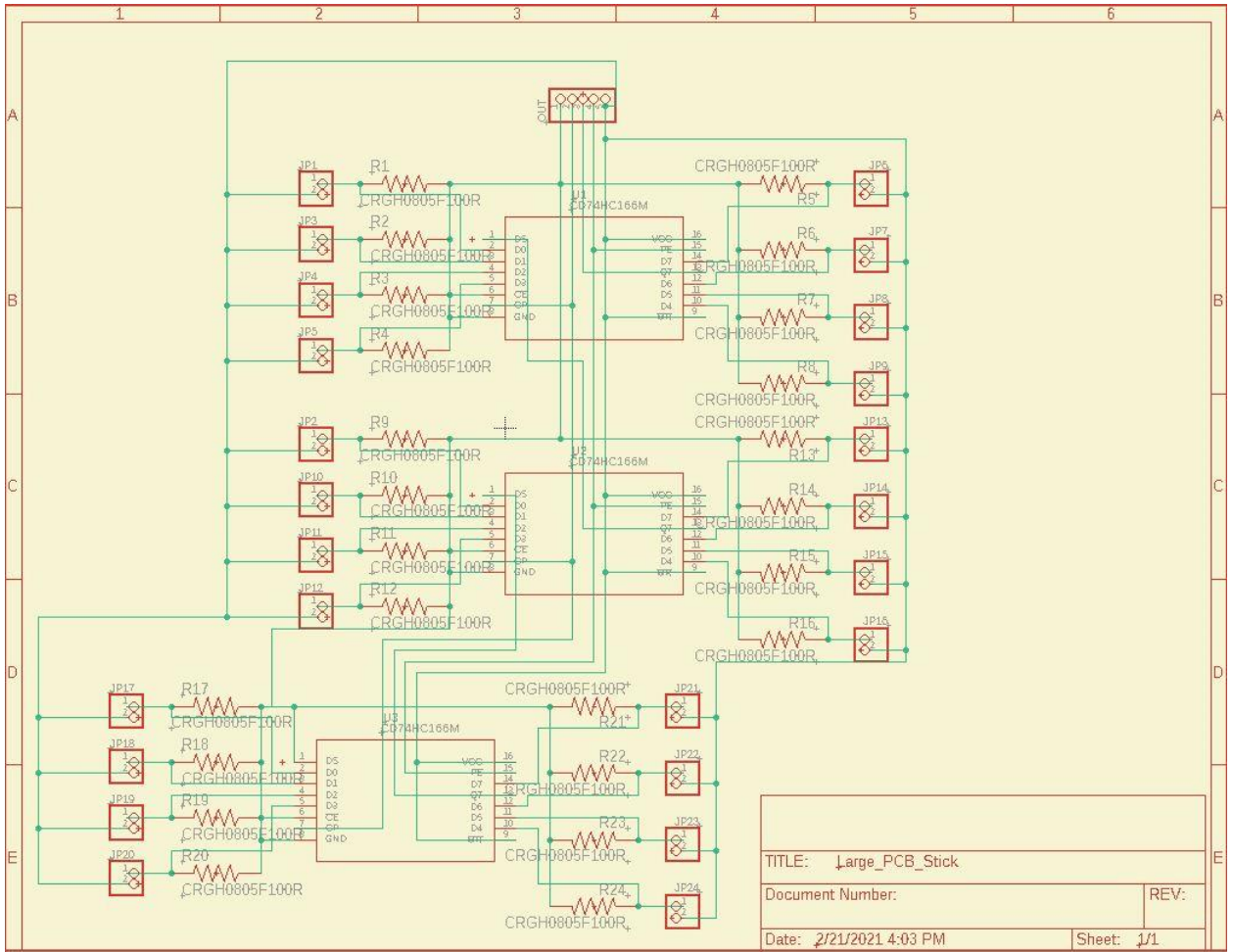
| | | | |
|--|---------------------------------|------------------------------|-----------------------------------|
| UNLESS OTHERWISE SPECIFIED DIMENSIONS IN INCHES TOLERANCES: X.X ± .0.1 X.XX ± .0.01 X.XXX ± .0.003 ANGLE ± .05 | PROJECT NAME: LOW COST HOTAS | PART NAME: THROTTLE FRONT | DRAWN BY: PATRICK DIXON |
| | SIZE: A | SCALE: 1/3" | MATERIAL: PLA |
| DATE: 04/13/21 | REVISION #: 0 | SHEET #: 1 OF 1 | PART NUMBER: SD T512-HOTAS-007 |

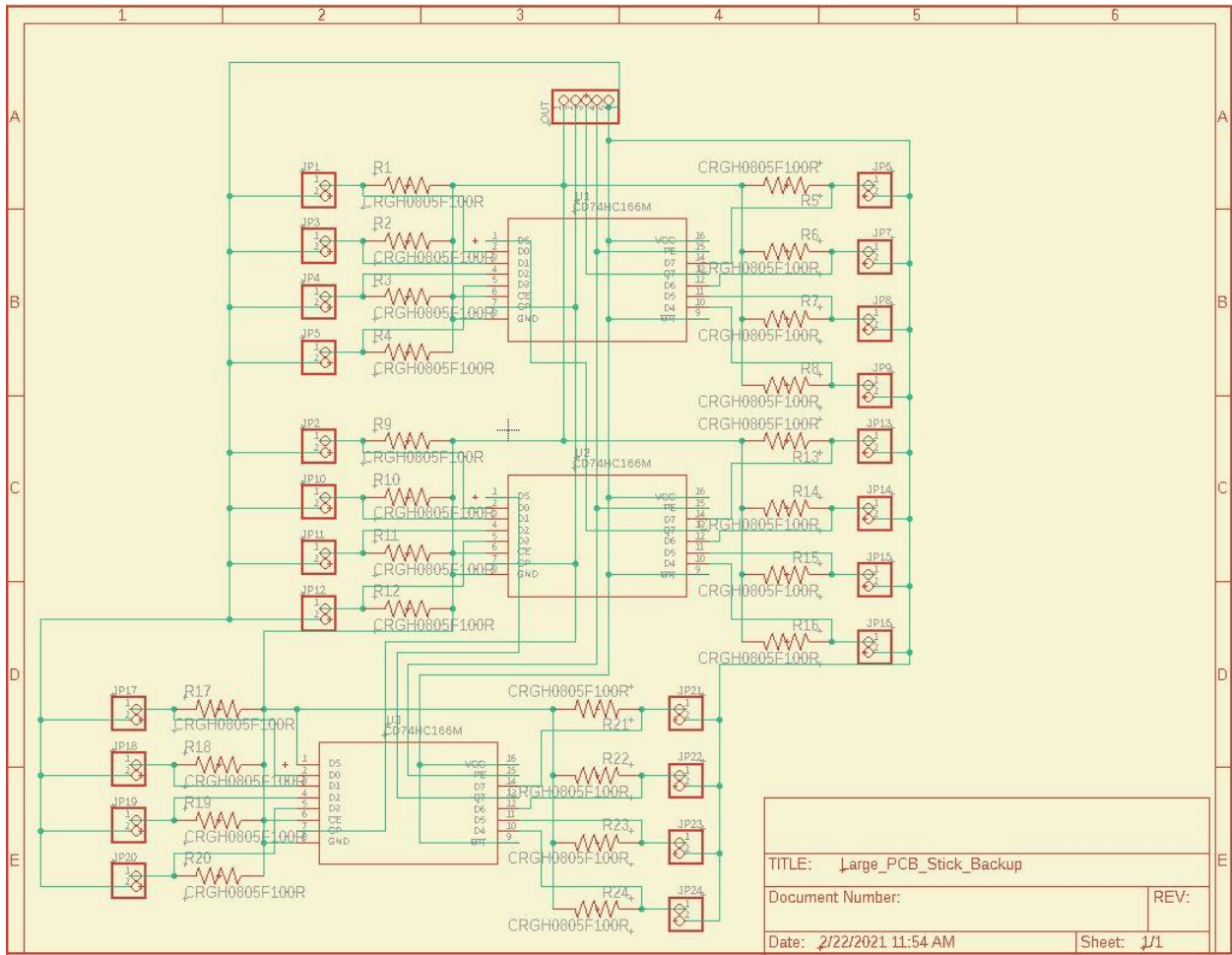
NOTE: SEE MECHANICAL MODEL FOR GREATER DETAILS
DRAWINGS USED FOR GD&T CHECKS

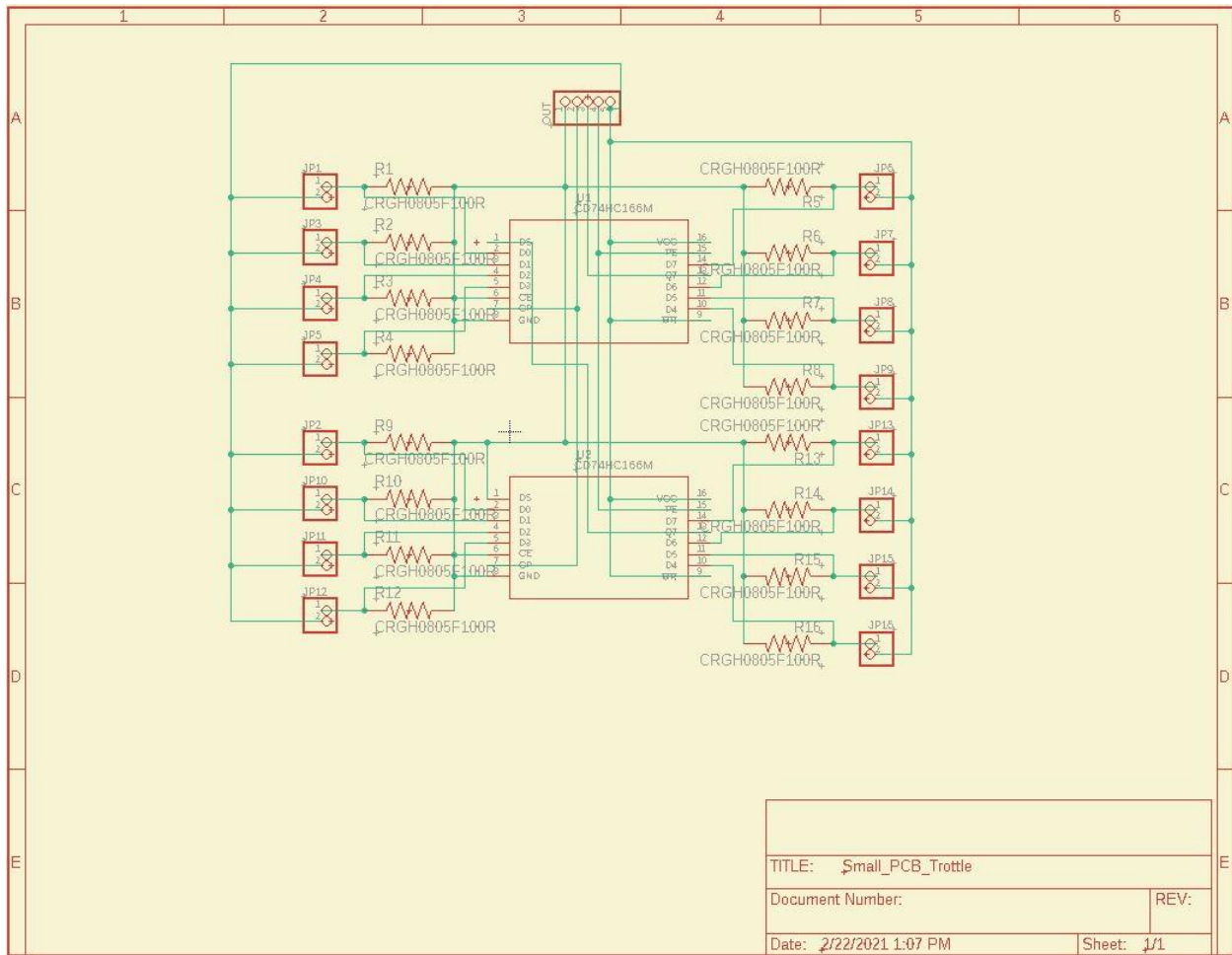
M3 NUT PLACEMENT
USE BOTTOM VIEW
TO PLACE LOCATION
0.24 ACROSS FLATS



| | | | |
|--|---------------------------------|----------------------------|-----------------------------------|
| UNLESS OTHERWISE SPECIFIED DIMENSIONS IN INCHES TOLERANCES: X.X ± .0.1 X.XX ± .0.01 X.XXX ± .0.003 ANGLE ± .05 | PROJECT NAME: LOW COST HOTAS | PART NAME: ST POT MOUNT | DRAWN BY: PATRICK DIXON |
| | SIZE: A | SCALE: 1:1" | MATERIAL: PLA |
| DATE: 04/13/21 | REVISION #: 0 | SHEET #: 1 OF 1 | PART NUMBER: SD TS12-HOTAS-006 |







MIL standard 1472 References

Mil Standard 1472 document parts relevant currently (note mil standard 1472 doc is over 400 pages)